

MONTHLY MEMBERSHIP PROGRESS REPORT

District 2 S2

Results as of: 5/31/2024

GMT:

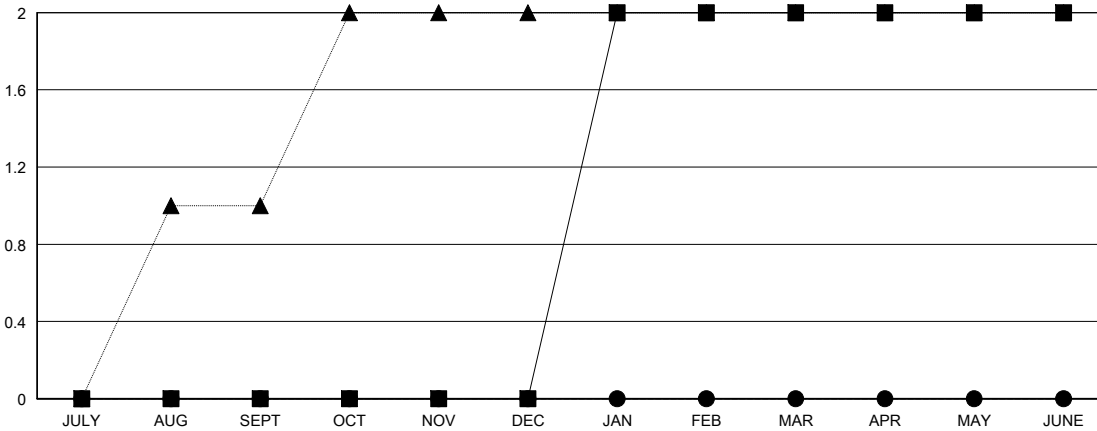
LOCATION TEXAS

GMT CA

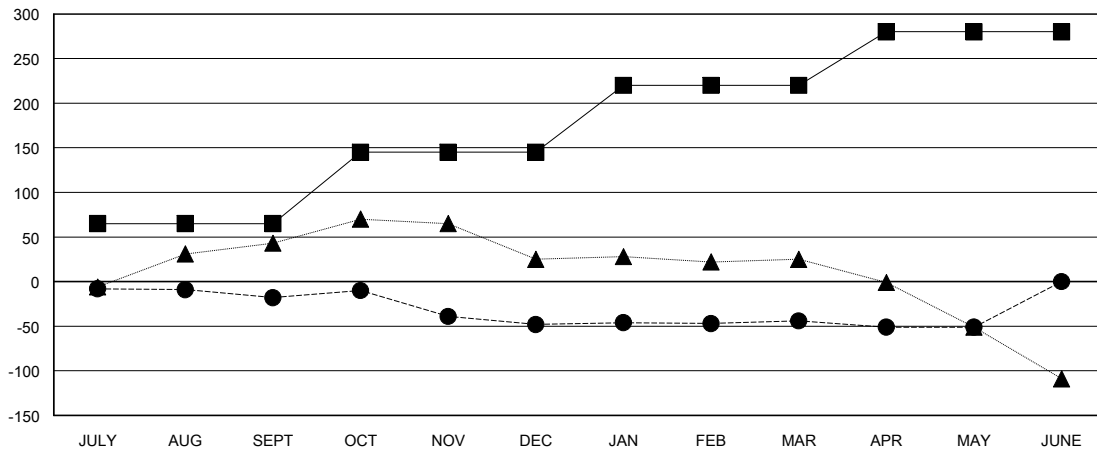
Clubs			
RESULTS FOR 2023-2024			
QUARTER	NEW CLUB GOAL	NEW CLUBS	DROPPED CLUBS
JULY/AUG/SEPT	0	0	1
OCT/NOV/DEC	0	0	0
JAN/FEB/MAR	2	0	0
APR/MAY/JUNE	0	0	0

Members			
RESULTS FOR 2023-2024			
QUARTER	MEMBER GROWTH NET GOAL	MEMBER GROWTH ACTUAL	DROPPED MEMBERS ACTUAL (including transfers)
JULY/AUG/SEPT	65	61	64
OCT/NOV/DEC	80	31	56
JAN/FEB/MAR	75	41	36
APR/MAY/JUNE	60	19	26

GOALS AND ACTUAL NEW CLUBS CUMULATIVE



GOALS AND ACTUAL MEMBERS CUMULATIVE



DROPPED CLUBS: 1	
DROPPED MEMBERS	
DECEASED	10
CLUB CANCELLED	0
OTHER	171
TOTAL	181

28 CLUBS OF 53 ADDED 1 OR MORE NEW MEMBERS

GENDER DISTRIBUTION	
MALE	724 (51.97%)
FEMALE	669 (48.03%)

[CLICK HERE FOR CUMULATIVE MEMBERSHIP DATA](#)

TOTAL FAMILY UNIT MEMBERS	271
FAMILY MEMBERS PAYING HALF DUES	140